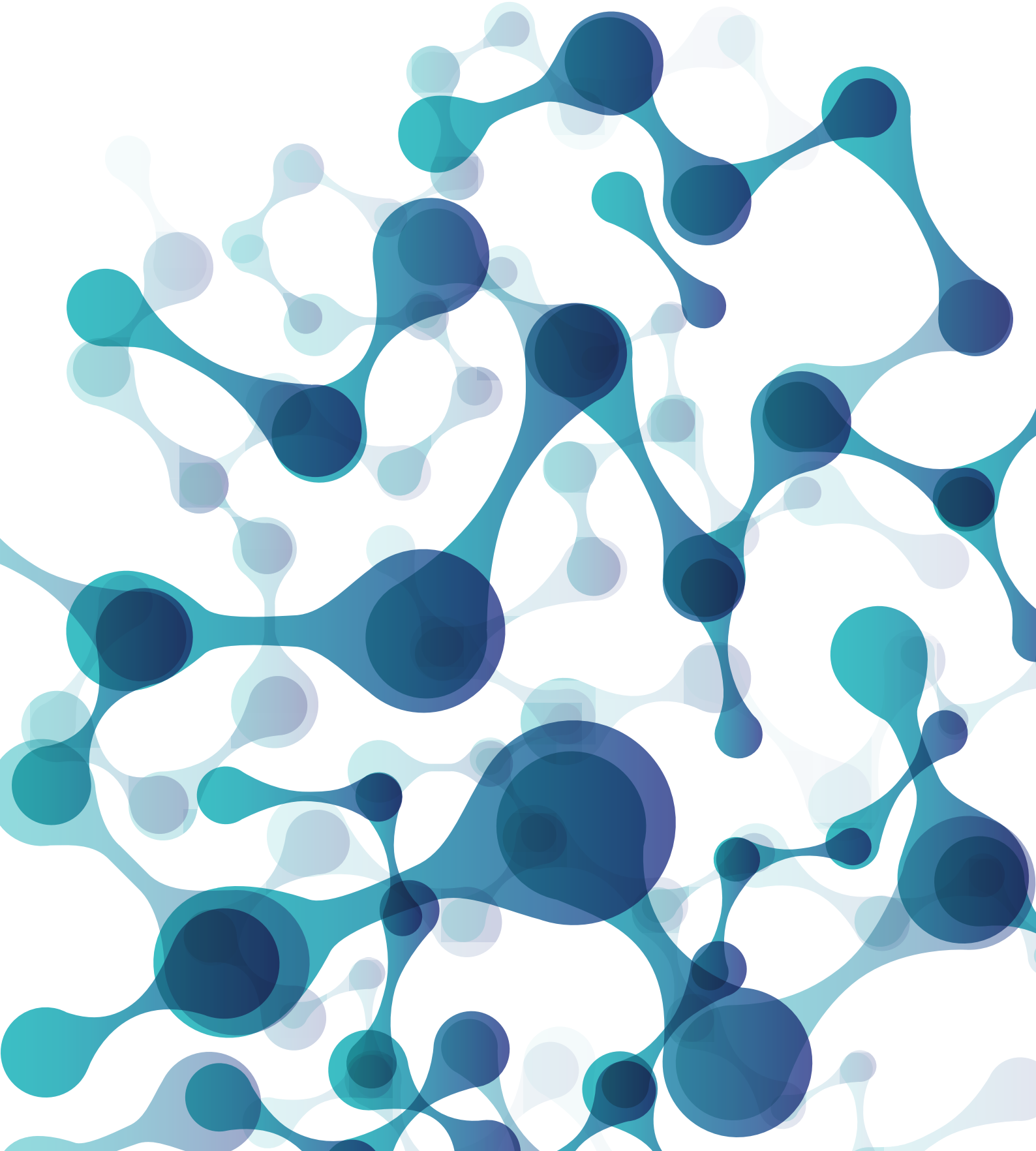
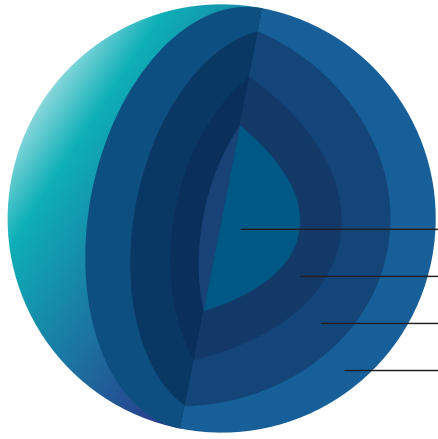


+
Neutral PelletsTM
(Pharmaceutical)



Neutral Pellets

Aromasules technology promotes a prolonged duration of aroma sensation and control release of fragrance at targeted site.



- Release Control Polymer
- Core granules or crystals
- Drug layer
- Protective coating or additional control polymer

XS = < 0.2mm

VVS = 0.2 - 0.3 mm

VS = 0.3 - 0.6 mm

S = 0.6 - 0.8 mm

M = 0.8 - 1.4 mm

L = 1.4 - 2.0 mm

XL = 2 - 5 mm

Mannitol Spheres

Available Percentage	Pharmacopia	Therapeutic	DMF
60%, 75%, 89.25%	USP/BP	Digestant	Available

Calcium Carbonate Spheres

Available Percentage	Pharmacopia	Therapeutic	DMF
60%, 75%, 89.25%	USP/BP	Digestant	Available

Sugar Spheres

Available Percentage	Pharmacopia	Therapeutic	DMF
60%, 75%, 89.25%	USP/BP	Digestant	Available

Tartaric Acid Spheres

Available Percentage	Pharmacopia	Therapeutic	DMF
60%, 75%, 89.25%	USP/BP	Digestant	Available

Lactose Spheres

Available Percentage	Pharmacopia	Therapeutic	DMF
60%, 75%, 89.25%	USP/BP	Digestant	Available

Citric Acid Spheres

Available Percentage	Pharmacopia	Therapeutic	DMF
60%, 75%, 89.25%	USP/BP	Digestant	Available



 **Umang Pharmatech Pvt Ltd**
Head Office

 **Caleva Pvt Ltd | Nutracode Pvt Ltd**
Partner's Office

 **Hizha Darou Co**
Distributor's Office



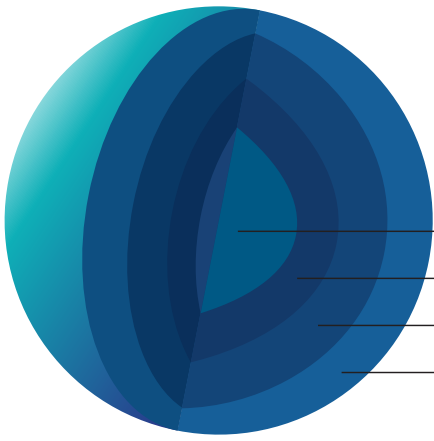
UMANG PHARMATECH PVT LTD

Survey No. 146, H. No. 1 (PT) , Vasai Phata Highway Junction, Pelhar,
NH-8, Vasai-Virar, Maharashtra 401208

☎ +91-(0250)-6681601/02 | ✉ marketing@umangpharmatech.com | 🌐 www.umangpharmaceuticals.com

Neutral Pellets

Aromasules technology promotes a prolonged duration of aroma sensation and control release of fragrance at targeted site.



Release Control Polymer

Core granules or crystals

Drug layer

Protective coating or additional control polymer

MCC Spheres

Available Percentage	Pharmacopia	Therapeutic	DMF
60%, 75%, 89.25%	USP/BP	Digestant	Available

Silica Spheres

Available Percentage	Pharmacopia	Therapeutic	DMF
60%, 75%, 89.25%	USP/BP	Digestant	Available

*Particle sizes:

XS < 0.2mm

VVS = 0.2 - 0.3 mm

VS = 0.3 - 0.6 mm

S = 0.6 - 0.8 mm

M = 0.8 - 1.4 mm

L = 1.4 - 2.0 mm

XL = 2 - 5 mm